

 **COVR**

AC3900
WHOLE HOME
WI-FI SYSTEM



 **COVR**

AC3900
WHOLE HOME
WI-FI SYSTEM



D-Link[®]

D-Link[®]



Covr your Whole Home in High-Power Wi-Fi

Say goodbye to Wi-Fi deadzones, buffering and multiple networks in your home. Covr is a seamless solution that gets rid of dead spots and blankets your home in high-power Wi-Fi.



HIGH PERFORMANCE

With a powerful AC2600 router at its core, Covr creates a 'PowrZone' which delivers lightning fast wireless speed, perfect for gaming and 4K streaming.



MORE COVERAGE

Combined, the Covr Router and Extender provide reliable Wi-Fi for up to 6000 sq. ft./550 sqm of seamless coverage. If you need additional coverage, you can add more Covr Extenders.



ONE SEAMLESS NETWORK

With Covr, there's just one wireless network name (SSID) for your entire home, no matter where you are.

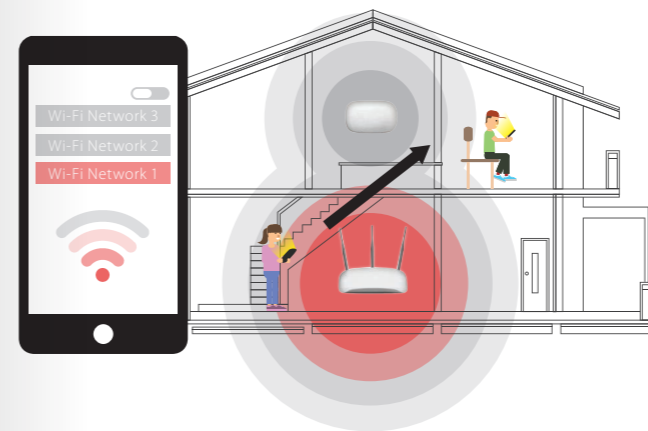


Smart Roaming



Gone are the days of only being able to use Wi-Fi in certain areas of your home: Seamless roaming lets you move around the house while always being connected to the strongest signal available. Forget about traditional Wi-Fi extenders which require you to connect to different networks as you move around, Covr ensures your entire home is covered by a single, seamless network.

Having one network name (SSID) across the network means once you connect, your connection is seamlessly maintained as you and your wireless devices roam around your home. As you move from room to room and floor to floor you'll experience an uninterrupted connection, with buffering, drop-outs and deadspots becoming a thing of the past.



Traditional Router + Extender Systems



Covr Whole Home Wi-Fi System



The Speed Your Home Needs

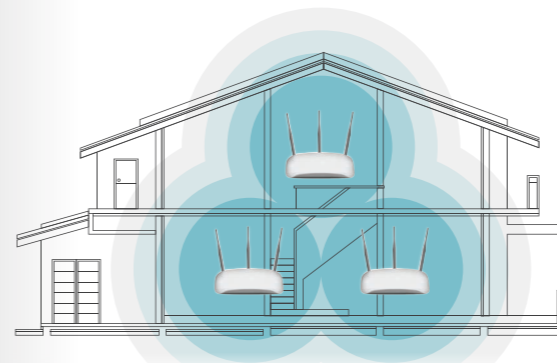


Covr responds to the need for speed as consumers use more and more Wi-Fi connected devices. Data-intensive activities like streaming 4K video, online gaming, and intense downloading mean a high-speed Wi-Fi connection is essential in the modern home.

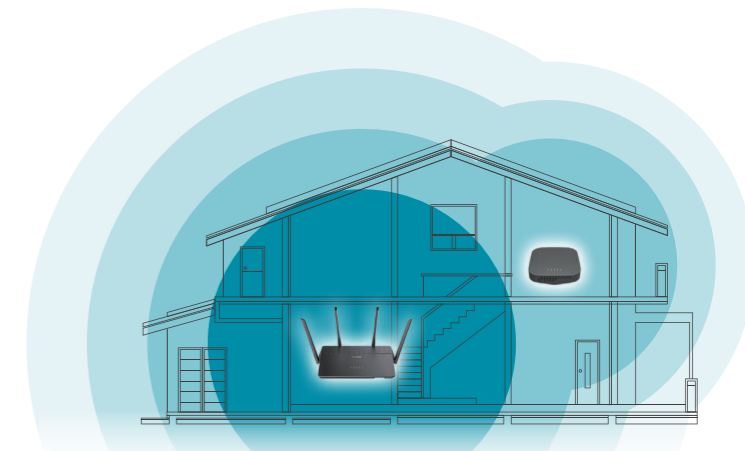
High-Power Wi-Fi



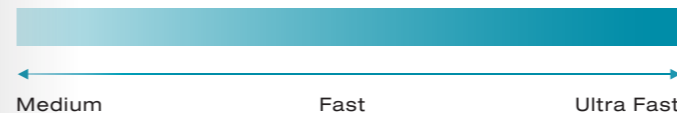
Most whole home Wi-Fi systems use multiple low-performance access points to disperse Wi-Fi throughout areas of the home. Covr uses a high-power AC2600 router at its core to handle the bulk of your Wi-Fi activity, creating a 'PowrZone' of blazing fast Wi-Fi speed throughout most of your home, with an additional seamless extender for that hard-to-reach place.



Other Whole Home W-Fi Systems



Covr Whole Home Wi-Fi System



PowrZone

Delivers up to

2X faster Wi-Fi speeds

where you need it most![†]

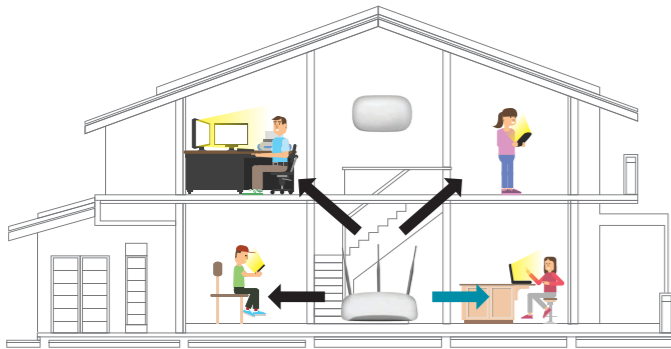
[†]Up to 2X faster speeds when connected to the Covr AC2600 Wi-Fi Router compared to AC1200 Wi-Fi Systems.



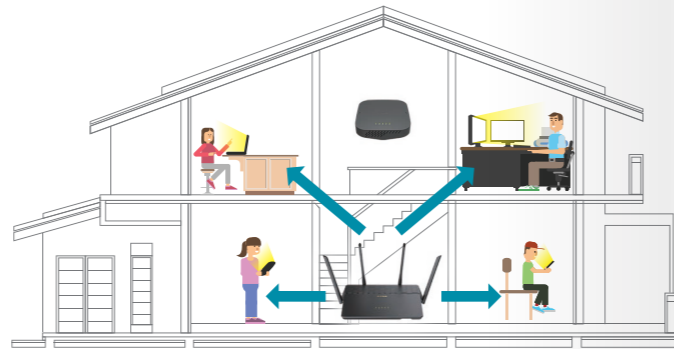
4x4 with MU-MIMO Technology



Like having multiple routers in your home, Multi-User MIMO (MU-MIMO) sends and receives data to and from multiple devices simultaneously to increase speed and efficiency. Your laptop, tablet, media player and game console can all be sending and receiving data at the same time, with no need to wait in turn, allowing you to get more out of your home Wi-Fi network than ever before.



Traditional Wi-Fi

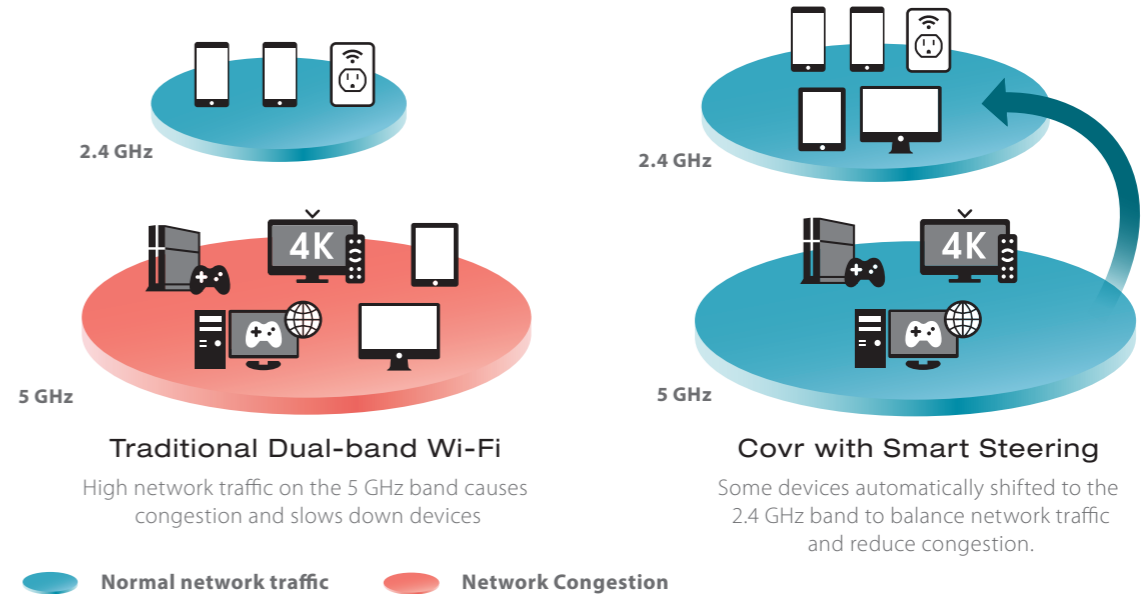


Covr with MU-MIMO

Smart Steering



If you don't know your 2.4's from your 5's, don't worry. Smart steering selects the best band for your device so that you get the best performance possible – all the time. With smart steering, Covr will automatically connect devices to the optimal Wi-Fi band and even move devices between Wi-Fi bands when the network experiences congestion. All this without dropouts, lag or any interruption to your wireless connection; and most importantly without you lifting a finger.

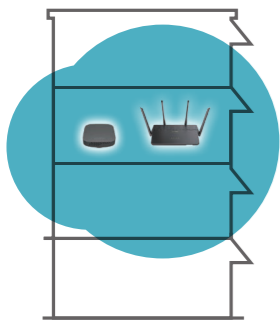




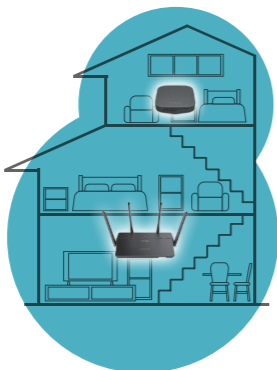
Expandable Network



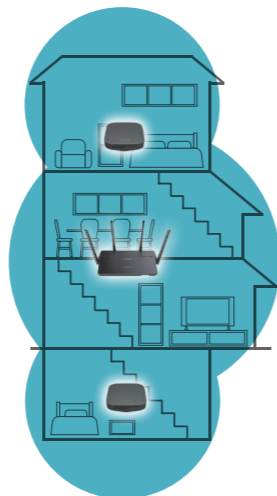
Covr's Wi-Fi System is pre-paired and works straight out of the box, so you just need to plug them in and get started. But Covr is also a scalable solution; extra extenders can be added to increase the reach of your network. Not enough coverage upstairs or in the back room? Scale up your Wi-Fi by adding another extender to get true whole-home coverage.



Loft



Villa



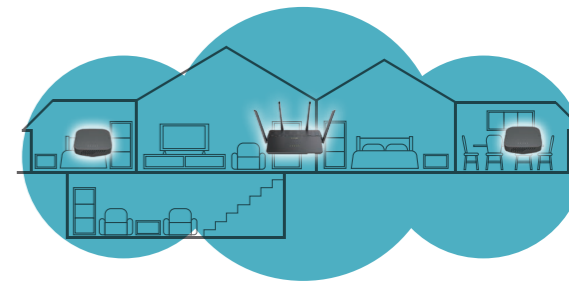
Townhouse



Contemporary



Mansion



Bungalow

Loft



Bungalow



Get to Know Your Covr Devices



Power
Internet
2.4 GHz Wi-Fi Band
USB Port
5 GHz Wi-Fi Band



Power
2.4 GHz Wi-Fi Band Uplink Strength
5 GHz Wi-Fi Band Uplink Strength
5 GHz Wi-Fi Band Downlink Strength
2.4 GHz Wi-Fi Band Downlink Strength



Power Input
Power Button
WAN Port
LAN Ports
Wi-Fi On/Off Button
Reset Button
WPS Button



Reset Button
Wi-Fi On/Off Button
LAN Ports
Power Input
Power Button



Simple Setup

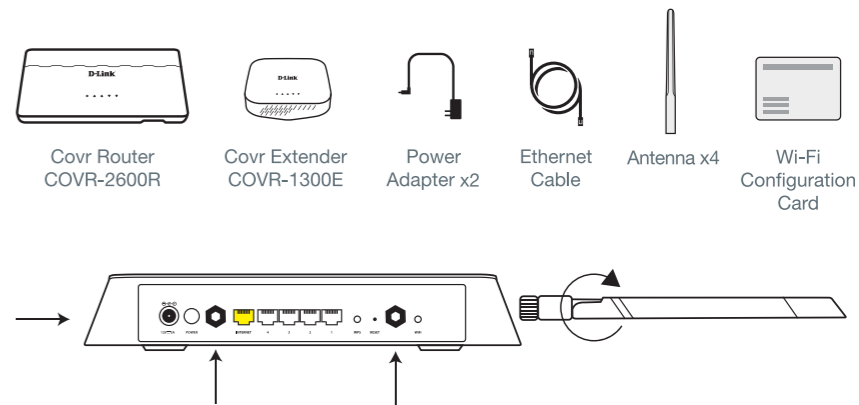


There are two easy ways to configure your Covr Wi-Fi system – Use the free D-Link Wi-Fi app for iOS and Android devices, or use the intuitive web-based setup wizard on your computer. Please see the following pages for further details on how to set up your Covr Wi-Fi system using these two methods.

Before You Start

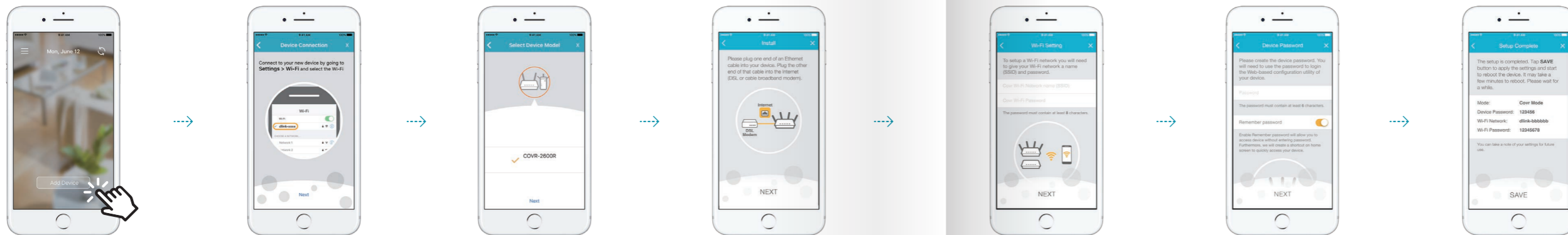
Check the contents of your Covr Wi-Fi System with the list on the right. Be sure to keep the Router and Extender close to each other during the setup process.

Connect the antennas to the router by screwing them in clockwise





Set Up Using the D-Link Wi-Fi App



1. Open the app and tap **Add Device**.

2. You will be instructed to connect your mobile device's Wi-Fi to your Covr network. The default network name (SSID) and password can be found on the included Wi-Fi Configuration Card and the sticker on the base of the router, and will look something like **dlink-XXXX**. Return to the D-Link Wi-Fi app and tap **NEXT**.

3. The D-Link Wi-Fi app will search for your Covr Whole Home Wi-Fi System. Once found, it will display the product details on the screen. Tap **NEXT** to continue. The wizard will then search for the Covr extender. Follow the on-screen instructions. When the extender has been successfully installed, tap **NEXT**.

4. Connect the Ethernet cable from your broadband modem to the yellow INTERNET port on the back of the Covr router and follow the on-screen instructions to set up your internet connection tap **NEXT**.

5. Create a Network Name (SSID) and password for your Covr Whole Home Network and tap **NEXT**.

6. Specify an administrator password for your Covr System (note that this should not be the same as your Wi-Fi network password configured in the previous step). Tap **NEXT**.

7. A summary of your network's configuration will be displayed. You should now connect to your new Covr Wi-Fi network using the network name and password which you specified earlier in the process. Tap **SAVE** to complete the setup process.

Download the free D-Link Wi-Fi app from the App Store or Google Play.

D-Link Wi-Fi



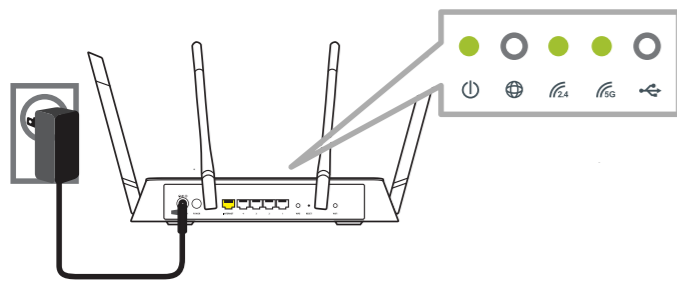
Download on the App Store

GET IT ON Google Play



Set Up Using Web Browser

Covr's intuitive setup wizard will guide you through the setup process and have your whole-home network up and running in no time.

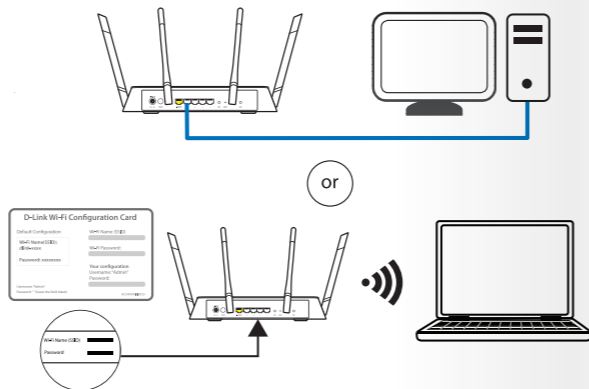


1.

Connect the power adapter to the Covr Router and plug into a power socket. Wait for the 2.4G and 5G LEDs to light solid green and then proceed to the next step.

TIP:

If the Power LED does not light up, press the Power button on the back of the Router.



2.

You can use either a wired (Ethernet) or wireless (Wi-Fi) connection to set up your Covr Wi-Fi System

Wired - Connect the Ethernet port on your computer to one of the four LAN ports on the Covr Router.

Wireless - Connect to the Covr Wi-Fi using the Wi-Fi Name and Password on the Wi-Fi configuration card.

http://covr.local/

3.

Type **http://covr.local/** into a web browser and follow the instructions to complete the setup.



4.

The wizard will guide you through the setup process. Click or tap **NEXT** to get started and follow the simple instructions.



Placing your Covr Router and Extender

Once you've completed the setup process, you can place the seamless extender in a location around your home to improve coverage.

The Covr Router will need to remain near your broadband modem, close enough to be connected by an Ethernet cable.

The Covr seamless extender needs to be within wireless range of the Covr Router. Check the '2.4 GHz Uplink' and '5 GHz Uplink' LEDs on the top of the extender to determine the optimal location. If the uplink LED light is solid green, that means your extender is receiving the best possible signal from the Covr Router. Flashing green LEDs indicate a medium-strength signal which will still provide satisfactory performance, however it is highly recommended to place the seamless extender in a location where the LEDs are solid green.

Optimal Signal



Good Signal





Network Management

The Covr Whole Home Wi-Fi System also boasts a number of high-end routing capabilities, giving you total control over how you manage and administer your network. Features include a Quality of Service (QoS) Engine, Firewall, Port Forwarding, Website Filters, Static Routing, Dynamic DNS, VPN Server, and Parental Controls. You can also manage individual clients by clicking on the network map on the home screen.



Network Status

Click on the router icon to get a snapshot of your network, including router IP address, IPv6 address, and Wi-Fi network status, Wi-Fi Name, and Password.



USB Devices

Connect a USB storage device to the Covr Router's USB port to share files. Click the icon to check storage status including total space, free space, and whether DLNA Media Server and File Sharing functionality are enabled.



Connected Clients

Check the status of individual devices connected to your Covr network by clicking on this icon. The name and IP address of each device will be displayed in the panel at the bottom of the screen. Click on the edit icon in the top right-hand corner of each device tile to manage that specific device.



Extenders

As you add more extenders to your Covr Whole Home Network, you can check the status of each extender by clicking on this icon. Click on the edit icon for each extender to change its display name. Clients connected to extenders will also be displayed here.

1. To manage connected devices, click on the **Connected Clients** icon



2. Click on the pencil icon at the top right of the device you wish to manage.



3. To reserve an IP address for that device, click on the **Reserve IP** slider and enter the desired address in the **IP Address** field (tip: The address should be in the format 192.168.0.xxx, with the final 3 digits being a number between 100 and 199). To block the device from your network, click the **Parental Control** slider and ensure that **Always Off** is selected from the drop-down menu.



Specifications

	COVR-2600R	COVR-1300E
Ethernet Ports	1 x Gigabit WAN / 4 x Gigabit LAN	2 x Gigabit LAN
Antennas	4 x External	2 x internal
Data Signal Rate	Up to 1733 Mbps (5 GHz) / Up to 800 Mbps (2.4 GHz)	Up to 867 Mbps (5 GHz) / Up to 400 Mbps (2.4 GHz)
USB Port	1 x USB 3.0	-
Dimensions	285 x 205 x 48 mm (11.22 X8.07 x1.89 inches)	134 x 134 x 32.6 mm (5.28 X5.28x1.28 inches)
WPS	Yes	Yes
Coverage Area	Up to 550 sqm / 6000 sq.ft.	

Features

- Qualcomm® SON technology for seamless roaming
- 802.11ac wave 2 dual-band wireless
- Combined speeds of up to AC2600 (router) and AC1300 (extender)
- 4x4 MU-MIMO
- Gigabit WAN and LAN ports
- USB 3.0 port



HIGH PERFORMANCE



MORE COVERAGE



ONE SEAMLESS NETWORK



Covr your Whole Home in High-Power Wi-Fi